



Smart decisions. Lasting value.™

RY 9 Rate Setting

(March 2023-February 2024)

Central Contra Costa Solid Waste Authority
December 8, 2022



RY 9 Rate Impact: Base Services Before Reserve and/or Agency Fee Adjustments

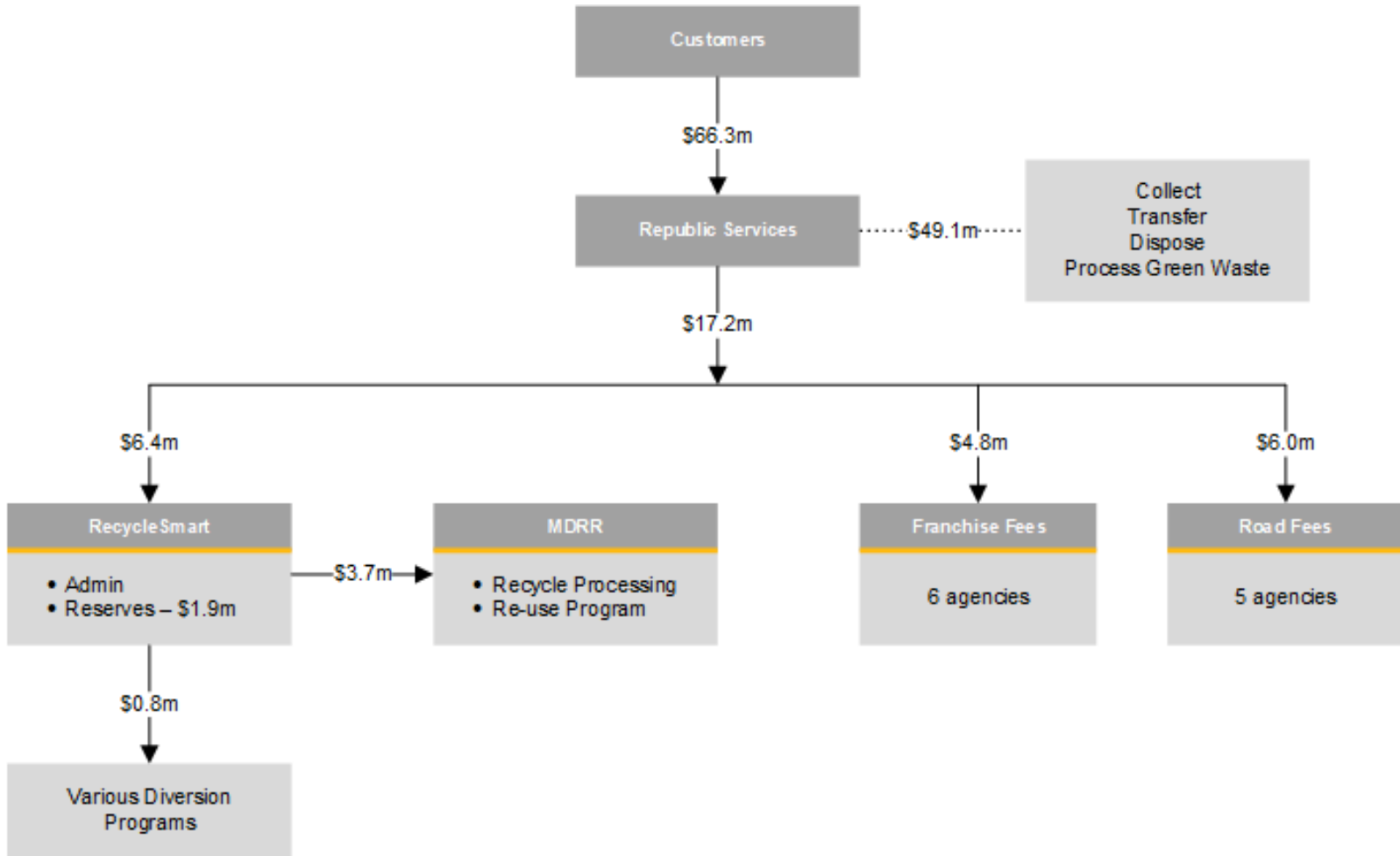
No.	Cost	Danville	Lafayette	Moraga	Orinda	Walnut Creek	County	Total
1	Total RY9 Revenue Requirement	\$ 12,493,977	\$ 8,882,814	\$ 4,980,471	\$ 7,070,840	\$ 21,115,129	\$11,762,093	\$66,305,324
2	RY8 Revenue Requirement	\$ 11,782,163	\$ 8,434,516	\$ 4,752,074	\$ 6,731,197	\$ 20,034,589	\$11,040,691	\$62,775,230
3	Prior RY Reserve Increase/Decrease	(553,631)	(146,228)	(65,386)	-	-	(191,059)	(956,304)
4	Adjusted RY8 Revenue Requirement	\$ 11,228,532	\$ 8,288,288	\$ 4,686,688	\$ 6,731,197	\$ 20,034,589	\$10,849,632	\$61,818,926
5	RY9 Surplus/(Shortfall)	\$ (1,265,445)	\$ (594,526)	\$ (293,783)	\$ (339,643)	\$ (1,080,540)	\$ (912,461)	\$ (4,486,398)
6	Rate Impact (using NO reserves)	11.27%	7.17%	6.27%	5.05%	5.39%	8.41%	7.26%

Total Revenues and Uses

Total Revenue	\$66.3m
• Republic Services fee	\$49.1m
• MDRR processing fee	\$2.6m
• MDRR re-use program fee	\$1.1m
• Franchise fees (6 agencies)	\$4.8m
• Road impact fees (5 agencies)	\$6.0m
• Diversion Programs (JPA)	\$0.8m
• Administration (JPA)	\$1.9m

} \$3.7m

How Does the Money Flow?



Ry 9 Project End-of-Year Reserves (After Rate and Agency Fee Adjustments)

Ry9 Projected End-of-Year Reserves

No.	Cost	Danville	Lafayette	Moraga	Orinda	Walnut Creek	County	Total
1	Proposed Rate Adjustment	8.00%	5.50%	6.27%	5.05%	5.39%	4.80%	
2	6/30/22 Ending Balances	\$ 2,785,723	\$ 2,532,842	\$ 881,400	\$ 1,236,142	\$ 3,995,590	\$ 2,285,143	\$ 13,716,840
3	Recycling Contribution Allocation	178,801	101,047	61,156	71,653	290,634	176,871	880,162
4	Ry8 Due To (Due From) Reserves	(553,631)	(146,228)	(65,386)	(0)	0	(191,059)	(956,304)
5	Ry9 Due To (Due From) Reserves*	(367,088)	(191,696)	-	-	-	(391,679)	(950,463)
6	Projected Available Reserves for Ry 10 Rates	\$ 2,043,805	\$ 2,295,964	\$ 877,169	\$ 1,307,795	\$ 4,286,224	\$ 1,879,276	\$ 12,690,235

Preliminary Member Agency Fee Adjustments

Member Agency	Franchise Fees	Vehicle Impact Fees
Danville	10.00% (no change)	\$868,803
Lafayette	10.00% (no change)	\$1,157,742
Moraga	12.00% (no change)	\$879,003
Orinda	12.20% (no change)	\$1,269,662
Walnut Creek	10.00% (no change)	\$1,849,099
County	7.00% (no change)	N/A

Preliminary Rate Year 9 Rate Adjustments (For Most Common Service Levels)

Member Agency	Proposed Rate Adjustment	Residential 32-gal Cart	Commercial 2 CY Bin, 1x/w k
Danville	8.00%	+\$2.66/month	+\$30.03/month
Lafayette	5.50%	+\$2.17/month	+\$26.55/month
Moraga	6.27%	+\$2.63/month	+\$30.48/month
Orinda	5.05%	+\$2.86/month	+\$33.27/month
Walnut Creek	5.39%	+\$1.44/month	+\$14.13/month
County	4.80%	+\$1.48/month	+\$17.82/month

Residential Rate Comparison

Jurisdiction	32-gal. \$/Mo.	Recycling Frequency	Yard Waste Frequency
Piedmont	\$95.55	Weekly	Weekly
El Cerrito	\$60.13	Weekly	Weekly
Orinda	\$59.47	Weekly	Weekly
Kensington	\$49.04	Weekly	2x per month
Richmond	\$45.20	Weekly	Weekly
Moraga	\$44.55	Weekly	Weekly
Hercules	\$43.65	Weekly	Weekly
San Ramon	\$42.05	Weekly	Weekly
Lafayette	\$41.69	Weekly	Weekly
Livermore	\$40.63	Weekly	Weekly
Pinole	\$40.63	Weekly	Weekly
West CC County	\$40.11	Weekly	Weekly
Martinez	\$38.80	Weekly	Weekly
Concord	\$38.57	Weekly	Weekly
Dublin	\$38.39	Weekly	Weekly
San Pablo	\$36.86	Weekly	Weekly
Danville	\$35.86	Weekly	Weekly
County	\$32.34	Weekly	Weekly
Pleasant Hill	\$31.66	Weekly	Weekly
Brentwood	\$29.77	Bi-weekly	Bi-weekly
Walnut Creek	\$28.18	Weekly	Weekly

* Reflects 2023 proposed rates; all other rates are subject to increases during 2023



Schedule and Next Steps

Activity	Completion Date
Opportunity to Revise Rate Strategies	December 12, 2022 to January 6, 2023
January Board Meeting: Adopt Rates	January 26, 2023